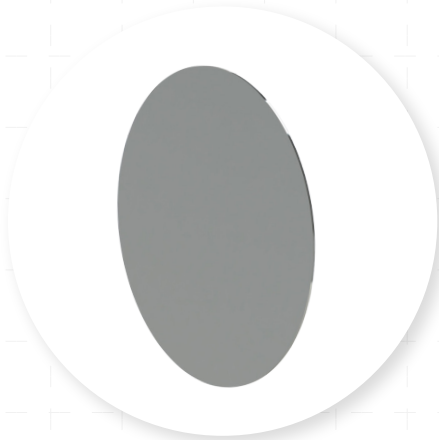


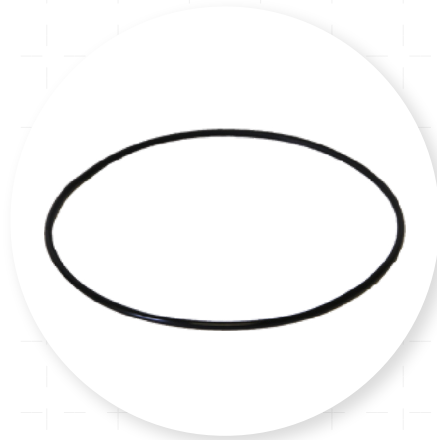
RAILWAY PRODUCTS





PAD BOLSTER GALVANISED STEEL PLATE

AM0059 2 x Ø250	AM0060 2 x Ø254
AM0061 2 x Ø343	AM0063 3 x Ø343
AM0065 3 x Ø180	AM0066 3 x Ø150
AM0067 3 x Ø254	AM0078 3 x Ø241
AM0079 2.5 x Ø241	AM0086 2.5 x Ø254
AM0087 5 x Ø230	AM0088 3 x Ø230
AM0089 2 x Ø230	AM0090 3 x Ø303
AM0091 2 x Ø303	AM0092 3 x Ø155



VACUUM CYLINDER JOINT / ROLLING RING

AM0062 21" JOINT RING 470 x 5 - 71013634
AM0074 18" JOINT RING 393 x 5 - 71015568
15" JOINT RING 317 x 5 - 71012123
18" ROLLING RING - 71017430
21" ROLLING RING - 71015378



AM0093 | GASKET FOR HOSE COUPLING (EP - 4; FP5; LE4)



AM0098 | RUBBER BUSH DRW TWK8557



AM1003 | RUBBER SANDWICH BOLSTER SPRING - 066005525



AM1004 | BOGIE SPRING ADAPTOR MK 3 DRW CME 68/28488 - 361 - 068052496



AM1005 | BOGIE SPRING
ADAPTOR MK 7 DRW CME
68 / 28598 - 361 - 068053465



AM1006 | BOGIE SPRING
ADAPTOR MK 5 DRW CME
68 / 28225 - 361 - 068028225



AM1007 | SPRING RING NOSE
SUSPENSION - 866209304



AM1008 | RUBBER SANDWICH
BOLSTER SPRING - DRW L43 /
20115 - 066049874



AM1009 | RUBBER SPRING CME
68 / 012093 - 361 - 068012093



AM1011 | BOGIE ANCHOR PADS CME
68 / 188420 - 360 (Ø6" x 1.5" THICK) -
068042224



AM1016 | PEDESTAL LINER
ASSEMBLY WITH CUT OUT DWG
A38339114 - 068040476 FEMALE

*SUPPLIED IN MILD STEEL, VESCONITE
(AM1064) AND LOW FRICTION, HIGH SPEC
MATERIAL*



AM1017 | PEDESTAL LINER
ASSEMBLY DRG A38339119 -
068040464 MALE

*SUPPLIED IN MILD STEEL, VESCONITE
(AM1064) AND LOW FRICTION, HIGH
SPEC MATERIAL*



AM1018 | BOLSTER
BUMPER - 888000027



AM1019 | BUMPER
BOLSTER PAD - 068042212



AM1020 | BOGIE ANCHOR
PADS 150 x 50 x 40 - 066028409



AM1021 | BUMPER BOLSTER
SIDE CONTROL - 066040545



AM1025 | RUBBER ROUND NOSE
CONE - 066051220



RUBBER INSULATION PAD

- AM1026** | Ø230
- AM1027** | Ø241
- AM1028** | Ø254
- AM1029** | Ø305
- AM1030** | Ø343



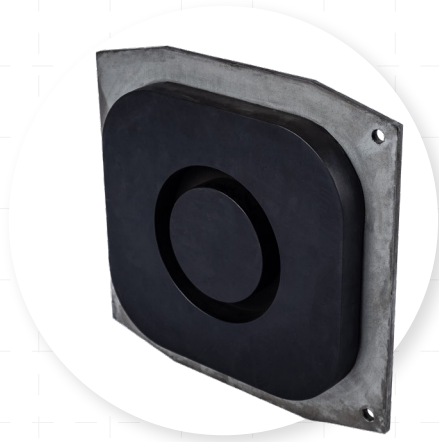
AM1031 | NOSE CONE TENSION
RUBBER ROUND - 068012081



AM1032 | MINI GUMMY MAT
EXCL BRACKET - 019800443



AM1032A | MINI GUMMY MAT
INCL BRACKET



AM1033 | BUFF PAD FOR SLIDING
CENTRE SILL - 068040476

AM1033A | BUFF PAD FOR SLIDING
CENTRE SILL ASSEMBLED UNIT



AM1034LH | SHOSHOLOZA VESTIBULE RUBBER SHEET DIAPHRAGM L/H - A164 - 49002

AM1034RH | SHOSHOLOZA VESTIBULE RUBBER SHEET DIAPHRAGM R/H - A364 - 49008

AM1035 | SHOSHOLOZA VESTIBULE RUBBER SHEET DIAPHRAGM TOP - A364-49004



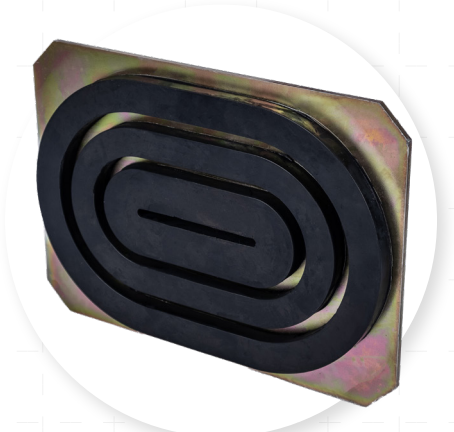
AM1044 | MOTOR NOSE SUSPENSION PACK - 077049668



AM1045, AM1048, AM1052 | MOUNT RESILIENT TRUCK BOLSTER - 077046171 / 07717700 / 077191615



AM1318 | BOGIE ANCHOR PADS PAD CME / 18849 - 36 (Ø5" x 1" THICK) - 0688042285



AM1660 | WAUGHMAT - COUPLER DRAWBAR HOOK - 068030204



AVON LLOYD REAR | DRAWGEAR ASSEMBLY COMPL - 168101569

AVON LLOYD FRONT | DRAWGEAR ASSEMBLY COMPL - 168101568



AM1993 | VACUUM BRAKE
WASHER - 77049126



AM1994 | OVAL GASKET - 71003208



AM1995 | VACUUM HOSE
COUPLING RUBBER



AM24380 | SNUBBER
RUBBER OUTER - 068013126



AM2856 | NC496 DRAWGEAR 8E
AND 10E LOCOS PEC10A0273 /
PEC10A0212



AM29691 | SNUBBER
RUBBER INNER - 068013138



AM2992 | SANDWICH RUBBER
BOLSTER MOUNTING - 077209408



AM2994 | SANDWICH RUBBER
BOLSTER MOUNTING - 077218992



BELLOW (282 x 241 x 70)



BELLOW (330 x 241 x 112) - 077056268



BELLOW (330 x 240) - 077049126

OTHER PRODUCTS AVAILABLE:
GASKET Ø120 x 2.5 THICK - 71011785
GLAND NECK RINGS - 71017215
VACUUM HOSE WASHER - 71002062